

877-880

05-9-19



**Uttar Pradesh Textile Technology Institute, Kanpur,
11/208, Souterganj, Kanpur**

ENQUIRY LETTER FOR CIVIL WORKS

Package Code: TEQIP-III/2019/UP/upti/170
Package Name: Extension of placement cell

Current Date: 05-Sep-2019
Method: Shopping Civil Works

Dear Sir,

Sub: INVITATION LETTER FOR CONSTRUCTION OF Extension of placement cell

1. You are invited to submit your most competitive quotation for the following works: -

Sr. No	Brief Description of the Works	Approximate value of Works (Rs.)	Expected Completion Period (in Days)
1	Extension of placement cell	4745000	90

2. Government of India has received a credit from the International Development Association (IDA) in various currencies equivalent to US\$ 36000000000 towards the cost of the Technical Education Quality Improvement Programme [TEQIP]-Phase III Project and intends to apply part of the Proceeds of this credit to eligible payments under the contract for which this invitation for quotations is issued.
3. The TEQIP-III Project in UTTAR PRADESH state is being implemented by UPTTI, Kanpur, which is an autonomous society registered under the Societies Registration Act.
4. To assist you in the preparation of your quotation, we are enclosing the following:
- 1) Layout Drawings of the works;
 - 2) Structural Details;
 - 3) Detailed Bill of Quantities, with estimated rates and prices;
 - 4) Technical Specifications;
 - 5) Instructions to Bidders (in two sections).
 - 6) Draft Contract Agreement format, which will be used for finalizing the agreement for this.
5. You are requested to provide your offer latest by **16:00hrs. On 19-Sep-2019**
6. Quotations will be opened in the presence of Bidders or their representatives who choose to attend at **16:00 on 20-Sep-2019** in the office of

Uttar Pradesh Textile Technology Institute, Kanpur, 11/208, Souterganj, Kanpur.

ofc

7. Liquidated Damages will be applied:
 1) Liquidated Damages Per Day Min % :N/A
 2) Liquidated Damages Max % : N/A

8. We look forward to receiving your quotations and thank you for your interest in this project.(Employer)

Name: **Uttar Pradesh Textile Technology Institute,Kanpur**

Address: **11/208, Souterganj, Kanpur,null**

Tel. No: **05122530199**

Fax No.**05122531814**

9. Payment Terms:-

On Successful Completion of 30% of work	30% of total cost
On Successful Completion of 60% of work	30% of total cost
On Successful Completion of 100% of work	40% of total cost

10. Steel bar must be from PWD approved list.
 11. Work Completion within 90 days.
 12. Work Details:-

S.no	Particulars	Approx. Qty.	Unit	Rate	Amount
1	Dismantling of R.C.C ,including Stacking of Material with in a a distance of 60 Meter.	2.01	Cum		
2	Dismantling brick Work including stacking of materials with in a distance of 60 meter.	12.85	Cum		
3	R.C.C Works With 1:1.5:3 in Column Details For Description See Pwd Schedule.	2.67	Cum		
4	Class -150 Brick Work in 1:6 Cement /Coarse in S/S For Details Description See Pwd Schedule.	62.24	Cum		
5	R.C.C Works With 1:1.5:3 in L.Bend/Sunshade/Stair Flight & Landing For Details Description See Pwd Schedule.				
a	Lintel Bend	3.54	Cum		
b	Sunshade	2.63	Cum		
c	Stair Flight & Landing	1.06	Cum		
6	Class -150 Brick Work in 1:4 C/ C Sand in S/S For Details Description See Pwd Schedule	10.08	Cum		
7	R.C.C Works With 1:1.5:3 in Beam For Details Description See Pwd Schedule .	4.01	Cum		

8	R.C.C Works With 1:1.5:3 in Slab For Details Description See Pwd Schedule	22.45	Cum		
9	M.S bars of all dia for reinforced concrete work For Details Description See Pwd Schedule	35.03	Qtl.		
10	20 mm Thick Bearing Plaster with 1:3 C/C sand Mortar with N/F For Details Description See Pwd Schedule	21.02	Sqm		
11	S/Making of 35 to 40 mm Thick Brick Tile Moulding on Parapet with Ratio 1:3 C /Csand Mortar Complete with all Respect.	68.85	Rmt		
12	Providing and laying integral cement based water proofing treatment (Brick Coba) For Details Description See Pwd Schedule	177.42	Sqm		
13	12/15 mm thick Plaster with ratio 1:6 Cement/Coarse Sand For Details Description See Pwd Schedule.				
a	Outer Plaster	464.63	Sqm		
b	Inner Plaster	337.11	Sqm		
14	S/F of unplasticised Rigid PVC rain water pipe Single socketed pipes.110 mm dia U.P.V.C Pipe For Details Description as Per D.S.R (Delhi Schedule Rate Book)	78.10	Rmt		
15	S/F of unplasticised Rigid PVC Rain Water Pipe Fitting of 110 mm Size For Details Description as Per D.S.R (Delhi Schedule Rate Book)				
a	110 mm Bend	11.00	Nos		
b	110 MM Shoe	11.00	Nos		
16	P/Laying of C.c 1:4:8 C/Csand/Sgrit-40 mm . For Details Description See Pwd Schedule	4.16	Cum		
17	P/Laying of C.c 1:2:4 C/Csand/Sgrit-20 mm . For Details Description See Pwd Schedule	8.16	Cum		
18	S/F of Cinder i/c supply , material, Labour ,T&p Complete	7.79	Cum		
19	P/Laying of 8 to 10 mm thick ivory or light shade vitrified tiles of 600mx600mm size in flooring with 1:3 C/Csand Mortar complete.For Details Description See Pwd Schedule	162.43	Sqm		
20	S /fixing 5-8 mm thick anti skid Tiles flooring 1:3 C/Csand Mortar size of tiles 300x300 mm .For Details Description See Pwd Schedule.	12.10	Sqm		
21	Supply & fixing 5 mm thick Glazed Tiles wall laid with 1:3 C/Csand Mortar size of tiles 300x300 mm .For Details Description See Pwd Schedule.	97.81	Sqm		

22	Granite Stone Slab 18 mm thick mirror Polished quarter Rounded with anti skid lines in treads of stair Case Full Length Flooring over 20 mm Thick Mortar with 1:4.For Details Description See Pwd Schedule.	49.44	Sqm		
23	P/ fixing stainless steel (Grade 304) railing made of Hollow tubes, channels, plates etc., including welding, grinding, buffing, polishing and making complete .For Details Description See D.S.R	314.16	Kg		
24	Providing and fixing 1mm thick M.S. sheet door with frame of 40x40x6 mm angle iron with Steel Primer completeFor Details Description See D.S.R	1.89	Sqm		
25	Supply and Fixing Powder Coated Aluminium door, window, ventilator Frame With 5 mm Glass pan,Aluminium Grill , Door Fitting (Door Closer, Handle ,locking Arrangement , Tower Bolt, Hinges, etc) and 12 mm thick prelaminated particle board flat pressed three layer or graded wood particle board conforming to IS: 12823 Grade I Type II, in panelling fixed in aluminum doors, windows shutters and partition frames with C.P. brass / stainless steel screws etc with EPDM rubber / neoprene gasket etc. complete as per the architectural drawings and the directions of engineer-in-charge	34.57	Sqm		
26	Scraping old White/Colour wash i/c disposal of with a Distance of 60 meter.For Details Description See Pwd Schedule.	222.15	Sqm		
27	Providing & Applying white cement Based Putty of Average Thickness of 1 mm of Approved Brand with Two Coat Oil Bound Distemeber including Supply of all Material,Labour T&p Complete with all Respect. (Inside)	430.72	Sqm		
28	P/Applying cement Based Putty of Average Thickness of 1 mm of Approved Brand with Finishing wall over Putty with Two coat Acrylic Exterior Paint including Supply of all Material,Labour T&p Complete with all Respect. (Inside)	686.78	Sqm		
29	Painting on Iron Work by Synthetic Enamel Paint over base Primer For Details Description See Pwd Schedule.	4.54	Sqm		

30 a	GI Metal Ceiling Clip in plain Beveled edge global white color tiles of size 600x600 and 0.5 mm thick with 25 mm height, made of G I sheet having galvanizing of 100 gms/ sqm (both sides inclusive) and 20% perforation area with 1.8 mm dia holes and having NRC of 0.5, electro statically polyester powder coated of thickness 60 microns (minimum), including factory painted after bending and perforation.	106.44	Sqm		
30 b	12.5mm thick tapered the tapered edge gypsum Moisture board	26.61	Sqm		
31	Providing & Fixing of Wall Pannelling Made with Mirandi/Kail Wood Frame of 2"x2.5" section @600mm c/c filling glass wool of 50 mm. Thick coverd with wire mesh net outer pannelling of teakwood strip size 75x12 mm fixed with steel screw all exposed surface finished with malamine polish complete as per direction.	87.24	Sqm		
32	S/Fof S.S Curtain Rod of 18 Gauge with all Fitting Comp.	22.54	Rmt		
33	Making Groove in Plaster i/c Labour T&P Comp.	469.26	Rmt		
34	Orissa Pattern W.C. pan of size 580x 440 mm with integral type foot rests flush pipe and over flow arrangement.For Details Description See D.S.R Item No.17.1.1	3.00	Nos		
35	Flat back wash Basin size 600x480 mm with single 15mm C.P. brass pillar tap.For Details Description See D.S.R Item No.17.7.5	4.00	Nos		
36	One urinal basin with 5 litre white P.V.C. automatic flushing cistern For Details Description See D.S.R Item No.17.4.1	1.00	Nos		
37	Providing and fixing flexible P.V.C. waste pipe for sink or wash basin including PVC waste Pipe -32 mm dia	5.00	Nos		
38	Providing & fixing 600x450mm bevelled edge mirrorFor Details Description See D.S.R Item No.17.31	4.00	Nos		
39	Providing & fixing PTMT towl rail complete with brackets fixed to wooden cleats with cp brass For Details Description See D.S.R Item No.17.73.2	4.00	Nos		
40	Providing and fixing C.P Brass Liquid soap container 109 mm wide ,125 mm high and 112 mm with snap fittings of approved quality and colour weighing not less than 105 gms	4.00	Nos		

41	Providing and fixing of P.V.C Water Tank For Details Description See D.S.R Item No.18.48	1000.00	Litre		
42	Making platform for water storage tank i/c b/w,Plaster.P.C.C Complete.	1.00	Nos		
43	Providing and fixing C.P.V.C Pipe & Fitting For Details Description See D.S.R Item No.18.8				
a	20 mm dia Nominal Outer dia Pipe	30.00	Rmt		
b	25 mm dia Nominal Outer dia Pipe	50.00	Rmt		
44	Providing and fixing 45 cm long unplasticised PVC connection pipe with brass unions.15mm nominal bore	3.00	Nos		
45	Providing & fixing CP brass long body bib cock of approved quality conforming to IS standards and weighting not less than 690 gms 15mm nominal bore	3.00	Nos		
46	Providing & fixing C.P brass angle valve for basin mixer and gyser points of approved quality conforming to IS 8931 15mm nominal bore	8.00	Nos		
47	Providing and fixing ball valve (brass) of approved quality complete. (High or low pressure with plastic floats).25mm nominal bore	2.00	Nos		
48	Covering of P.V.C Pipe with 1:2:4 Cement, Course sand / Stone Grit -20 Including cost of Supply of Material Labour Material T&p Complete. With All Repect 80 mm to 150mm	20.00	Rmt		
49	Providing soil, waste and vent pipes.				
a)	110mm dia P.V.C Pipe	30.00	Rmt		
b)	75 mm dia P.V.C Pipe	20.00	Rmt		
50	Providing of PVC N-Trap 100x75	5.00	Nos.		
51	P.V.C Plain Bend				
a)	110 mm P.V.C Bend	4.00	Nos.		
b)	75 mm P.V.C Bend	2.00	Nos.		
52	P.V.C Tee Bend				
a)	110 x 110 mm	2.00	Nos.		
b)	75 x 75 mm	2.00	Nos.		
53	M.S Clamp with Double Nut				
a)	110 mm	10.00	Nos.		
b)	75 mm	10.00	Nos.		
54	C.P Floor Jali				
a)	110 mm	5.00	Nos.		
55	P.V.C Cowel				
a)	75 mm	2.00	Nos.		
56	Solvent	1.00	Liter		

57	Providing and making Main Hole Chamber Including e/w ,b/w , plaster r.c.c cover etc complete in all respect size of Main Hole Chamber (600x600x600)	4.00	Nos.		
58	Wring point for Light with 1.5 Sq. mm FR PVC insulated multistrend single core copper conductor cable in PVC conduit with 1.5 Sq. mm FR PVC insulated multistrend copper conductor cable as earthwire drawn inside modular switch & ceiling rose angle/ batten holder on 3mm thick phenolic paminated backlite sheet etc.complete in all respect.	26	Nos		
59	Wring point for fan/fresh air fanwith 1.5 Sq. mm FR PVC insulated multistrend single core copper conductor cable in PVC conduit with 1.5 Sqmm FR PVC insulated multistrend copper conductor cable as earthwire drawn inside modular switch & ceiling rose angle/batten holder on 3mm thick phenotic paminated backlite sheet etc. complete in all respect.	14	Nos		
60	Wring point for plug with 1.5 Sq. mm FRPVC insulated multistrend single core copper conductor cable in PVC conduit with 1.5 Sq. mm FR PVC insulated multistrend copper conductor cable as earthwire drawn inside modular switch & socket etc. complete in all respect.	6	Nos		
61	Wring point for Call bell with 1.5 Sq. mm FR PVC insulated multistrend single core copper conductor cable in PVC conduit with 1.5 Sq. mm FR PVC insulated multistrend copper conductor cable as earthwire drawn inside modular bell orsh for two pin socket etc. complete in all respect..	1	Nos		
62	Supply & wiring of submains with two number 4.0 sq.mm PVC insulated single core copper conductor in 20mm dia heavy duty PVC conduit with 1 no. 2.5 sq.mm FR PVC insulated multistrend single core copper conductor cable as earth continulty wire drawn inside the conduit complete in all respect.	350	Rmt		
63	Supply & wiring of submains with Four number 10.0 sq.mm PVC insulated single core copper conductor in 32 mm dia heavy duty PVC conduit with 2 no. 6.0 sq.mm FR PVC insulated multistrend single core copper conductor cable as earth continulty wire drawn inside the conduit complete in all respect.	60	Rmt		
64	Supply and fixing LED tube light with batten suitable for 1x22 watt. LED tube Light comp. including tube complete in all respects cat-AAA.	4	Nos		
65	S/F of 6Amp. To 32 amp. SPMCB (10 KA) C Curve Cat - A	30	Nos		
66	S&F of 63Amp 2 Pole DP MCB (10 KA) C Curve Cat- A	3	Nos		

67	S/f of Surface /Flush Mountain 12 way SPN Distribution Board with additional Metal Door without MCB Complete in all Repect.	3	Nos		
68	S/F of Call Bell of approved make on polised MDFEG/ Teak ply board including making connection etc. complete in all respect.	1	Nos		
69	S/F of power plug with 20 Amp/250 volt flush type modular switch and 5 pin 20 A/250 volt flush type universal modular socket switch on concealed M.S. box including supply of all material, labour T&P etc. required for proper completion of work.	10	Nos		
70	Supply & burying of Earthing Electrode T-19 (Hot Dip Galvanized), Length 300mm, Outer pipe 50mm, inner pipe 25, Terminal dia 12mm, Outer GI pipe of 16 SWG and inner GI pipe of 12 SWG with Hot Dip galvanization up to 100 micron filled with crystallinace conductive mixture (CCM) having anti corrosive & conductive property with 50 Kgs activated soil (BFC) capable of reducing the soil resistivity with good mixture of retaining capacity along with 30 cm squire C.I. frame with hinged cove & masonty housing. (From electrode terminal to switch board, cost of 25x3 G.I. strip will be extra) Make: As approved in U.P.P.W.D., & C.P.R.I. Certified.	2	Nos		
71	S&L of 25mm x 3mm G.I. Strip from earth electrode directly in the ground as requird complete in all respect.	30	Rmt		
72	S/L of 1800mm x 900mm x 12mm thick chequered rubber matting of tested quality.	1	Nos		
73	Supply & wiring of submains with two number 1.5 sqmm PVC insulated single core copper conductor in 20mm dia heavy duty PVC conduit with 1 no. 1.5sqmm FR PVC insulated multistrend single core drawn inside the conduit complete in all respect.	220	Rmt		
74	Supply and Fixing of 36 watt to 46 watt indoor Recess mounting LED Square Fitting for Armstrong ceiling having powder coated die cast aluminium housing with body extended heat sink & diffuser of special Polycarbonate meterial and drive set complete in all respect. CAT- AAA	15	Nos		
75	S/F of sheet steel enclosure surface/ flush mounting fitted with 30 amp 2 pin and earth metal clad scraping earth plug & socket complete in all respect.	6	Nos		
76	S/F of 1200 mm Ceiling Fan ISI - 5 Star Rated	12	Nos		
77	12 " Exhaust Fan Heavy Duty	2	Nos		
78	Louer Shutter	2	Nos		

79	Supply & Erection of factory fabricated and wired metal cald dust and vermin proof floor mounting M. S. Channel Base with bottom and top cable entreis Electrical control panel with TPN MCCB (Fore Pole 36 KA with thermal maganatic release) Switches complete and instrument chamber etc. complete in all respects. The instrument chamber shall be separate and shall comprise of flush type digital metering system for phase to phase voltage and single phase voltage, current and other parameter (KVA,P.F,KW etc) in each phase with touch type selector switches for different readings, instrument fuses, current transformer etc. The panel board shall have suitable capacity electrolytic aluminium busbars as per IS8623 or above istulated with heat shrink sleeving and mounted on non hygrosopic supports such as CMC/DMC support with deteachable side covers and shall be suitable for extension on the sides. The MCCB's shall be complete with suitable cable end boxes, compression glands and indicating lamp on incoming etc. The job includes the grounting of the board as per direction of Engineer-in-Charge. All out goings of 100 Amp. and above will be provided shall be fabricated with CRCA sheet with a minimum thickness of 1.6 mm/2 mm. Cubicle type switch board shall be of cat A & B only.Incoming : - 200 Amp MCCB - 01 No. Outgoing : - 100 Amp MCCB - 01 No. 63 Amp MCCB - 03 No.	1	Job		
80	Providing fixing testing and commissing of 04- Zone Main Control Panel, facilities like open /short circuit, fire and fault indication etc. completre with Battery charger and all other accessories strictly as per IS : 2189 As Specification with lamp test facility Agni, ECD, ASE Make.	2	Nos.		
81	Providing fixing testing and commissing of Apollo, Agni, System sensor make (Series-65) Photo Electric Smoke Detector as per specification compltet with junction box and base.	55	Nos.		
82	Providing fixing testing and commissing of Manual Call Point Break glass in metallic box complete as per IS : 2189 as specification Agni, ECD, ASE Make.	6	Nos.		
83	Providing fixing testing and commissing of Electronic Alarm Sounder in metallic box, complete as per IS : 2189 as specification Agni, ECD ASE Make.	3	Nos.		
84	Providing fixing, testing and commissing of 20 mm MS Conduit pipe as per ISI	550	Rmt		
85	Providing fixing, testing and commissing of 1.5 Sqmm copper conductor PVC insulated copper wire as per ISI	2750	Rmt		

86	2 x 12 Volt 7 AH Maintenance free battery for backup support. Exide make	2	Set		
87	Providing fixing testing and commissioning of Remote response, complete as per IS : 2189 as specification with lamp test facility Agni, ECD, ASE Make.	4	Nos.		
88	Supply and fixing of fire extinguisher, ABC Type 6.00 kg. capacity (ISI Marked IS : 15683 & TAC approved) complete with initial charge and wall bracket, along with supply of all materials and labour for proper completion of work.	6	Nos		
89	Third Party Audit Report by IIT Kanpur /HBTI Kanpur/PWD	1	Job		
90	Dimantling of Plaster and disposal of scrap	15	Sqm		
91	Waterproof treatment	15	Sqm		
92	Plaster 1:4 cement Core sand	15	Sqm		
93	Bathroom Tiles (As approved by UP PWD)	20	Sqm		
94	Total Cost (INR)				
95	GST (INR)				
96	Grand Total (INR)				

*Note:- Work Details In Sr. No. 1 to 96 will be consider as one work.

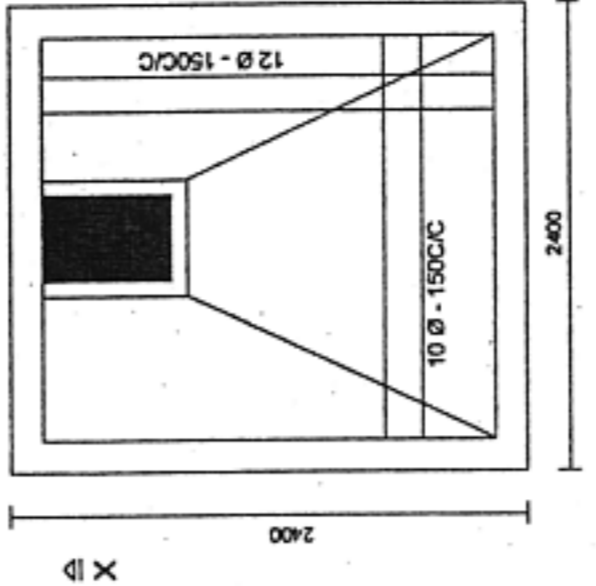
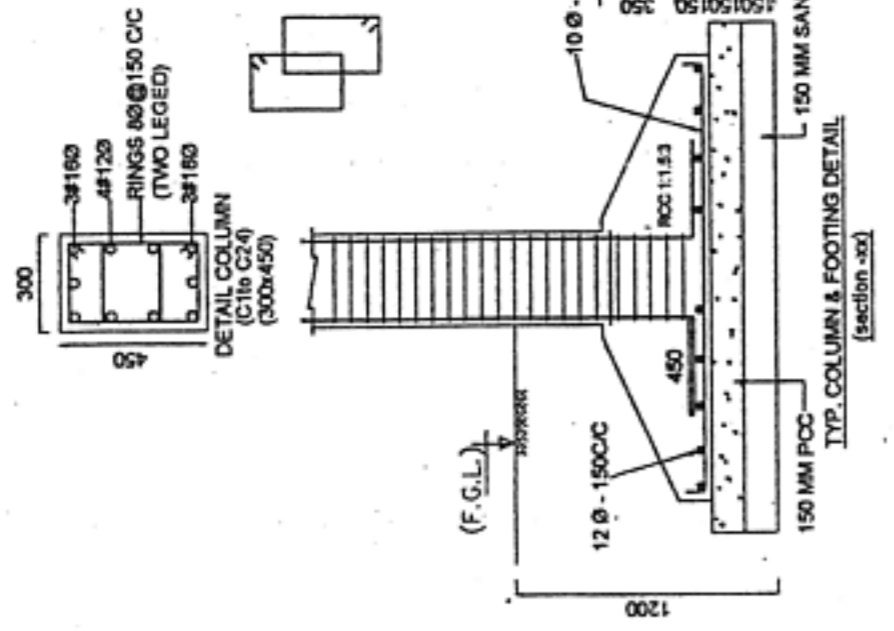
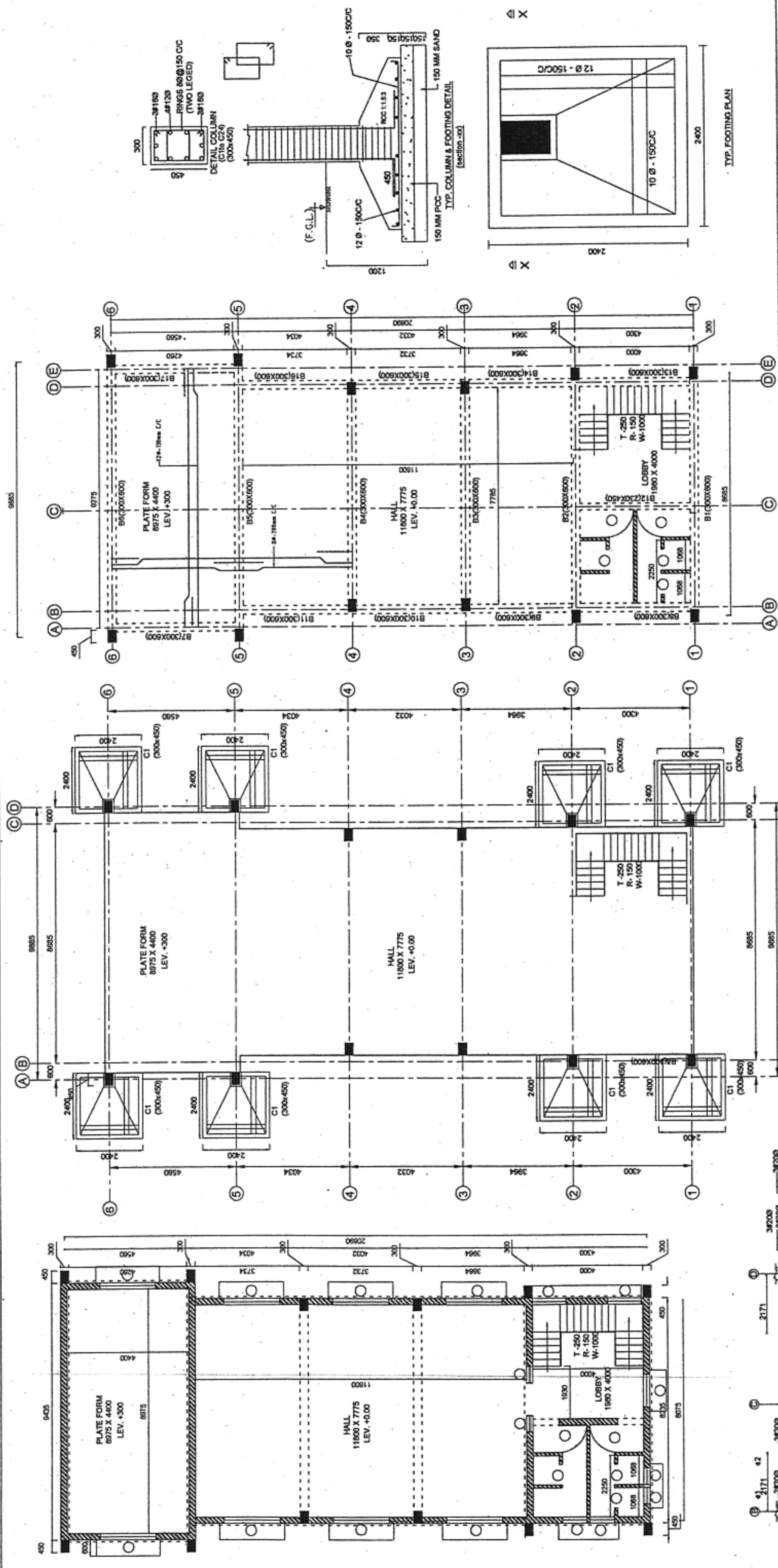

Director

U.P. Textile Technology Institute
11/208, Souterganj
Kanpur U.P.-208001

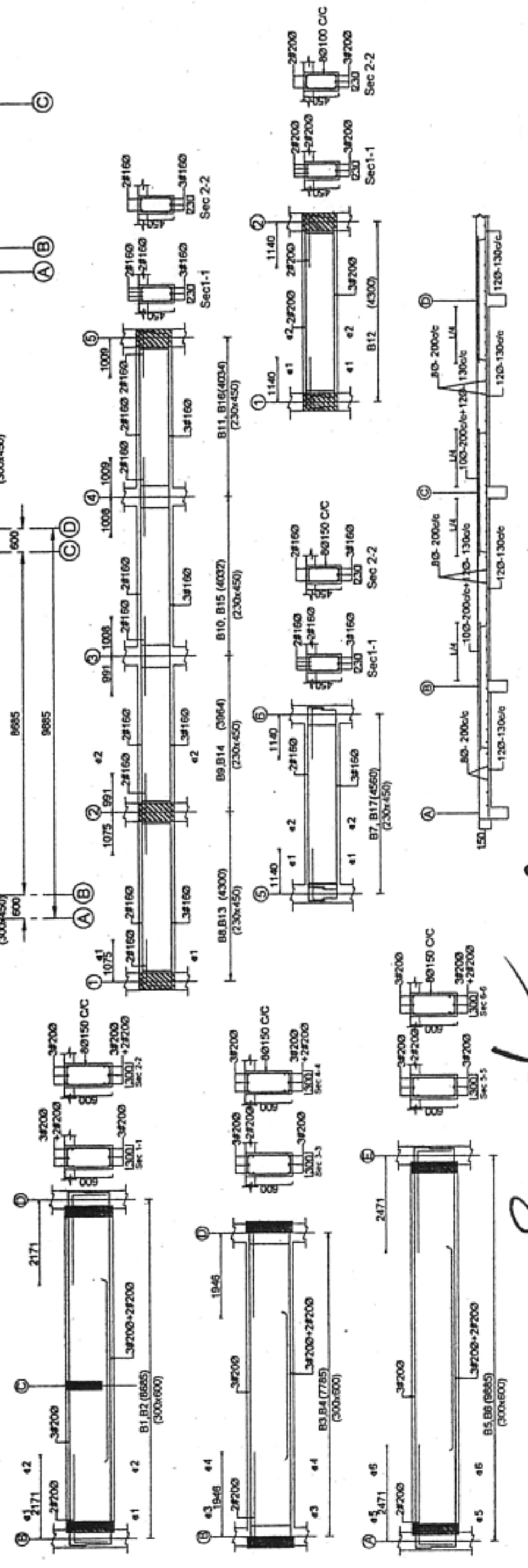
13. Structural Design

PRODUCED BY AN AUTODESK STUDENT VERSION

PRODUCED BY AN AUTODESK STUDENT VERSION



CLIENT TEXTILE TECHNOLOGY INSTITUTE, SOUTERGANJ KANPURNAGAR		PROJECT EXTENSION OF HALL AT FIRST FLOOR OF PLACEMENT CELL & AUDITORIUM BUILDING AT UTTAR PRADESH TEXTILE TECHNOLOGY INSTITUTE, SOUTERGANJ KANPURNAGAR	CONTRACTOR CONSULTANT	DRG. NO VE/BU/019	SHEET NO. 1 OF 1	DATE	SIZE A1
		TITLE R / F DRAWING OF EI BUILDING					
			CONTRACTOR VENTECH ENGINEERS 1170/45, L.G.F. ENVRAD COMPLEX, SHARDA NAGAR, KANPUR				



Handwritten signature

SLAB SECTION - LL

DRG. NO VE/BU/019 SHEET NO. 1 OF 1 DATE

SIZE A1

Instructions to Bidders

SECTION – A

1. Scope of Works

The **Uttar Pradesh Textile Technology Institute, Kanpur** (Employer) invites quotations for the construction of works as detailed in the table given below-

Sr. No	Brief Description of the Works	Approximate value of Works (Rs.)	Expected Completion Period (in Days)
1	Extension of placement cell	4745000	90

The successful bidder will be expected to complete the works by the intended completion date specified above

2. Qualification of the bidder: The bidder shall provide qualification information which shall include:-

- (a) Total monetary value of construction works performed for each year of the last 3 years;
- (b) Income tax clearance certificate from the concerned IT circle;
- (c) Report on his financial standing; and
- (d) Details of any litigation, current or during the last 3 years in which the bidder is involved, the Parties concerned and disputed amount in each case.

3. To qualify for award of the contract the bidder:-

(a) Should have satisfactorily completed as a prime contractor at least one similar work of value not less than Rs. 500,000 in the last three years;

(b) Should possess valid electrical license for executing building electrification works (in the event of the works being sub - contracted, the sub-contractor should have the necessary license);

(c) Should possess required valid license for executing the water supply/sanitary works (in the event of the works being sub-contracted, the sub-contractor should have the necessary license);

4. Bid Price

(a) The contract shall be for the whole works as described in the Bill of quantities, drawings and technical specifications. Corrections, if any, shall be made by crossing out, initialling, dating and re writing.

(b) All duties, taxes and other levies payable by the contractor under the contract shall be included in the total price.

(c) The rates quoted by the bidder shall be fixed for the duration of the contract and shall not be subject to adjustment on any account.

(d) The rates should be quoted in Indian Rupees only.

5. Submission of Quotations

5.1 The bidder is advised to visit the site of works at his own expense and obtain all information that may be necessary for preparing the quotation.

5.2 Each bidder shall submit only one quotation.

5.3 The quotation submitted by the bidder shall comprise the following:-

(a) Quotation in the format given in Section B.

(b) Signed Bill of Quantities; and

(c) Qualification information form given in Section B duly completed.

5.4 The bidder shall seal the quotation in an envelope addressed to the **Uttar Pradesh Textile Technology Institute, Kanpur, 11/208, Souterganj, Kanpur** (Purchaser). The envelope will also bear the following identification: - Quotation for **Extension of placement cell** (Name of the Contract).
Do not open before **20-Sep-2019 16:00** (time and date of quotation opening).

5.5 Quotations must be received in the office of the **Uttar Pradesh Textile Technology Institute, Kanpur, 11/208, Souterganj, Kanpur** (Employer) not later than the time and date given in the letter of invitation. If the specified date is declared a holiday, quotations shall be received up to the appointed time on the next working day.

5.6 Any quotation received by the **Uttar Pradesh Textile Technology Institute, Kanpur, 11/208, Souterganj, Kanpur**, (Employer) after the deadline for submission of quotations will be rejected and returned unopened to the bidder.

6. Validity of Quotation

Quotation shall remain valid for a period not less than **60** days after the deadline date specified for submission.

7. Opening of Quotations

Quotations will be opened in the presence of bidders or their representatives who choose to attend on the date and time and at the place specified in the letter of invitation.

8. Information relating to evaluation of quotations and recommendations for the award of contract shall not be disclosed to bidders or any other persons not officially concerned with the process until the award to the successful bidder is announced.

9. Evaluation of Quotations

The Employer will evaluate and compare the quotations determined to be substantially responsive i.e. Which

(a) Meet the qualification criteria specified in clause 3 above;

(b) Are properly signed; and

(c) Conform to the terms and conditions, specifications and drawings without material Deviations.

10. Award of contract

The Employer will award the contract to the bidder whose quotation has been determined to be substantially responsive and who has offered the lowest evaluated quotation price and who meets the specified qualification criteria.

10.1 Notwithstanding the above, the Employer reserves the right to accept or reject any Quotations and to cancel the bidding process and reject all quotations at any time prior to The Award of contract

10.2 The bidder whose bid is accepted will be notified of the award of contract by the Employer Prior to expiration of the quotation validity period.

11. Performance Security

Within 15 days of receiving letter of acceptance, the successful bidder shall deliver to the **Uttar Pradesh Textile Technology Institute, Kanpur, 11/208, Souterganj, Kanpur** (Employer) the performance security (either a bank guarantee or a bank draft in favour of the Employer) for an amount equivalent of 5% of the contract price. The Performance Security shall be valid till the expiry of the period of maintenance of the work, specified in clause 12.

12. Period of Maintenance:

The "Period of Maintenance" for the work is **12 months** from the date of taking over possession or one full monsoon season whichever occurs later. During the period of maintenance, the contractor will be responsible for rectifying any defects in construction free of cost to the Employer.

13. Purchase of all construction materials including cement and steel as per the specifications (ISI certification marked goods wherever available) shall be the responsibility of the contractor.

SECTION – B

1. **Format for Qualification Information.**
2. **Format for Submission of Quotation.**
3. **Format of Letter of Acceptance.**

QUALIFICATION INFORMATION

1. For Individual Bidders

1.1 Principal place of business: _____

Power of attorney of signatory of Quotation.

[Attach copy]

1.2 Total value of Civil Engineering _____

Construction work performed in the last _____

Three years (in Rs. Lakhs) _____

1.3 Work performed as prime contractor (in the same name) on works of a similar nature over the last three years.

Project Name, Name of Employer Description of work Contract No. Value of contract (Rs. Lakhs) Date of issue of work order Stipulated period of completion Actual date of completion Remarks explaining reasons for delay and work completed

Existing commitments and on-going works:

Description of Work

- (1) **Place & State**
- (2) **Contract No. & Date**
- (3) **Value of Contract**
(Rs. Lakh)
- (4) **Stipulated period of completion**
- (5) **Value of works* remaining to be completed**
(Rs. Lakhs)
- (6) **Anticipated date of completion**

* Enclose a certificate from Engineer concerned.

1.4 Proposed subcontracts and firms involve

Sections of the works	Value of Sub-contract	Sub-contractor (name & address)	Experience in similar work

1.5 Evidence of access to financial resources to meet the requirements of working capital: cash in hand, lines of credit, etc. List them below and attach copies of support documents.

1.6 Name, address, and telephone, telex, and fax numbers of the Bidders' bankers who may provide references if contacted by the Employer.

1.7 Information on litigation history in which the Bidder is involved.

Other party(ies)	Employer	Cause of dispute	Amount involved	Remarks showing present status

QUOTATION

*Description of the Works:

To:

Subject: Construction of.....

.....

Reference : Letter No.....dated.....from.....

Sir,

We offer to execute the Works described in your letter referred to above in accordance with the Conditions of Contract enclosed therewith at:.... percentage above / below the estimated rates, i.e., for a total Contract Price of -

Rs. ** _____ [in figures]

Rs. _____ [in words].

This quotation and your written acceptance of it shall constitute a binding contract between us. We understand that you are not bound to accept the lowest or any quotation you receive.

We hereby certify that we have taken steps to ensure that no person acting for us or on our behalf will engage in bribery. We hereby confirm that this quotation is valid for 45 days as required in Clause 6 of the Instructions to Bidders.

Yours faithfully,

Authorized Signature:

Date: _____

Name & Title of Signatory: _____

Name of Bidder: _____

Address : _____

* To be filled in by the Employer before issue of the Letter of Invitation.

** To be filled in by the Bidder, together with his particulars and date of submission at the bottom of this Form.

LETTER OF ACCEPTANCE
CUM NOTICE TO PROCEED WITH THE WORK
(LETTERHEAD OF THE EMPLOYER)

Dated: _____

To: [Name and address of the Contractor]

Dear Sir,

This is to notify you that your Quotation dated _____ for execution _____ for the contract price of Rupees _____ [amount in words and figures], is hereby accepted by us.

You are hereby requested to furnish performance security for an amount of Rs. _____ (equivalent to 3% of the contract price) within 15 days of the receipt of the letter. The Performance Security in the form of Bank guarantee or a Bank draft in favour of..... (Employer) shall be valid till the expiry of the period of maintenance i.e. up to _____. Failure to furnish the Performance Security will entail cancellation of the award of contract.

You are also requested to sign the agreement form and proceed with the work not later than _____ under the instructions of the Engineer, _____ and ensure its completion within the contract period.

With the issuance of this acceptance letter and your furnishing the Performance Security, contract for the above said work stands concluded.

Yours faithfully

Authorized Signature

Name and title of Signatory

Draft Agreement form for Construction through Lump Sum Contract

ARTICLES OF AGREEMENT

1. This deed of agreement is made in the form of agreement on _____ day _____ month _____ 20 ____, between the _____ (Employer) or his authorized representative (hereinafter referred to as the first party) and _____ (Name of the Contractor), S/O _____ resident of _____ (hereinafter referred to as the second party), to execute the work of construction of _____ (hereinafter referred to as works) on the following terms and conditions.

2. **Cost of the Contract**

The total cost of the works (hereinafter referred to as the "total cost") is Rs. ____ as reflected in Annexure - 1.

3. **Payments under its contract:**

Payments to the second party for the construction work will be released by the first party in the following manner: -

On Successful Completion of 30% of work	30% of total cost
On Successful Completion of 60% of work	30% of total cost
On Successful Completion of 100% of work	40% of total cost

(The above payment terms have been drafted for construction of school buildings; modify this suitably for other works)

3.1 The advance shall be repaid with percentage deductions from the interim payments, commencing with the next Interim Payment at the rate of ____@@percent of the amounts of all Interim Payment Certificates until the advance has been repaid, always provided that the advance shall be completely repaid prior to the expiry of the original time for completion

@The Guarantee shall remain effective until the advance payment has been repaid

@@Stipulate appropriately as 30/25/15 % depending on number of payment stages.

3.2 The Employer shall retain (Retention Money) 6% of the amount from each payment due to the Contractor subject to the maximum of 5% of final contract price. Half of the amount retained shall be repaid upon completion of the works, and other half shall be repaid when the Defects Liability Period has passed, and the Project Manager has certified that all Defects notified to the Contractor before the end of this period have

been corrected. On completion of the whole works the Contractor may substitute the balance retention money with an "on demand" Bank guarantee

3.3 Payments at each stage will be made by the first party:

- (a) On the second party submitting an invoice for an equivalent amount
- (b) on certification of the invoice (except for the first instalment) by the engineer nominated by the first party with respect to quality of works in the format in Annexure - 2; and
- (c) upon proper and justified utilization of at least 50 % of the previous instalment and 100 % of any prior instalment.

4. Notice by Contractor to Engineer

The second party, on the works reaching each stage of construction, issue a notice to the first party or the Engineer nominated by the first party [who is responsible for supervising the contractor, administering the contract, certifying payments due to the contractor, issuing and valuing variations to the contract, awarding extension of time etc.) to visit the site for certification of stage completion. Within 15 days of the receipt of such notice, the first party or the engineer nominated by it, will ensure issue of stage completion certificate after due verification.

5. Completion time

The works should be completed in _____ (months/weeks/days) from the date of this Agreement. In exceptional circumstances, the time period stated in this clause may be extended in writing by mutual consent of both the parties

6. If any of the compensation events mentioned below would prevent the work being completed by the intended completion date, the first party will decide on the intended completion date being extended by a suitable period:

- a) The first party does not give access to the site or a part thereof by the agreed period.
- b) The first party orders a delay or does not issue completed drawings, specifications or instructions for execution of the work on time.
- c) Ground conditions are substantially more adverse than could reasonably have been assumed before issue of letter of acceptance and from information provided to second party or from visual inspection of the site.
- d) Payments due to the second party are delayed without reason.
- e) Certification for stage completion of the work is delayed unreasonably.

7. Any wilful delay on the part of the second party in completing the construction within the stipulated period will render him liable to pay liquidated damages. @ \$\$INV_LIG_DAMAGE_MIN\$\$ % per day which will be deducted from payments due to

him. The first party may cancel the contract and take recourse to such other action as deemed appropriate once the total amount of liquidated damages exceeds 5 % of the contract amount.

(@Note: The amount of liquidated damages per day should be determined at not less than 0.05 % of the contract value of the works and indicated here).

Liquidated Damages Per Day Min % : N/A

Liquidated Damages Max % : N/A

8 Duties and responsibilities of the first party

- 8.1 The first party shall be responsible for providing regular and frequent supervision and guidance to the second party for carrying out the works as per specifications. This will include written guidelines and regular site visit of the authorized personnel of the first party, for checking quality of material and construction to ensure that it is as per the norms.
- 8.2 The first party shall supply 3 sets of drawings, specifications and guidelines to the second party for the proposed works
- 8.3 Possession of the site will be handed over to the second party within 10 days of signing of the agreement.
- 8.4 The Engineer or such other person as may be authorized by the first party shall hold meeting once in a month where the second party or his representative at site will submit the latest information including progress report and difficulties if any, in the execution of the work. The whole team may jointly inspect the site on a particular day to take stock of activities.
- 8.5 The Engineer shall record his observations/instructions at the time of his site visit in a site register maintained by the second party. The second party will carry out the instructions and promptly rectify any deviations pointed out by the engineer. If the deviations are not rectified, within the time specified in the Engineer's notice, the first party as well as the engineer nominated by it, may instruct stoppage or suspension of the construction. It shall thereupon be open to the first party or the engineer to have the deviations rectified at the cost of the second party.

9. Duties and responsibilities of the second party

- 9.1 The second party shall:
 - a) take up the works and arrange for its completion within the time period stipulated in clause 5;
 - b) employ suitable skilled persons to carry out the works;
 - c) regularly supervise and monitor the progress of work;
 - d) abide by the technical suggestions / direction of supervisory personnel including engineers etc. regarding building construction;
 - e) be responsible for bringing any discrepancy to the notice of the representative of the first

party and seek necessary clarification:

- f) ensure that the work is carried out in accordance with specifications, drawings and within the total of the contract amount without any cost escalation;
- g) keep the first party informed about the progress of work;
- h) correct the notified defects within the length of time specified by the Project Manager;
- i) be responsible for all security and watch and ward arrangements at site till handing over of the building to the first party;
- j) maintain necessary insurance against loss of materials/cash, etc. or workman disability compensation claims of the personnel deployed on the works as well as third party claims from the start date to the end of defect liability period;
- k) pay all duties, taxes and other levies payable by construction agencies as per law under the contract (First party will effect deduction from running bills in respect of such taxes as may be imposed under the law);
- l) abide by all labour enactments and rules made there under, regulations, notifications and bye laws of the State or Central Government or local authority;
- m) abide by all enactments on environmental protection and rules made there under, regulations, notifications and by-laws of the State or Central Government, or local authorities;
- n) be responsible for the safety of all activities on the Site.

10. Variations / Extra Items

The works shall be executed by the second party in accordance with the approved drawings and specifications. No variation in cost is acceptable. However, if the Engineer issues instructions for execution of extra items, the following procedure shall be followed: -

- a) The second party shall provide the Engineer with a bid for carrying out the extra items when requested to do so by the Engineer. The Engineer shall assess the bid, which shall be given within seven days of the request before the extra items are ordered
- b) If the bid given by the second party is unreasonable, the Engineer may order the extra items and make a change to the Contract Price which shall be based on Engineer's own forecast of the effects of the extra items on the Contractor's costs.
- c) The second party shall not be entitled to additional payment for costs, which could have been avoided by giving early warning.

11. Securities

The Performance Security shall be provided to the Employer no later than the date specified in the Letter of Acceptance and shall be issued in an amount and form and by a bank or surety acceptable to the Employer. The Performance Security shall be valid until a date 28 days from the date of issue of the Certificate of Completion in the case of a Bank Guarantee.

12. Termination

- 12.1** The Employer may terminate the Contract if the other party causes a fundamental breach of the Contract.
- 12.2** Fundamental breaches of Contract include, but shall not be limited to the following:
- (a) the contractor stops work for 28 days and the stoppage has not been authorized by the Engineer;
 - (b) the Contractor has become bankrupt or goes into liquidation other than for a reconstruction or amalgamation;
 - (c) the Engineer gives Notice that failure to correct a particular Defect is a fundamental breach of Contract and the Contractor fails to correct it within a reasonable period of time determined by the Engineer;
 - (d) the Contractor does not maintain a security which is required;
 - (e) the Contractor has engaged in corrupt, fraudulent, collusive, coercive or obstructive practices, in competing for or in executing the Contract; and
 - (f) the contractor has delayed the completion of the Works by the number of days for which the maximum amount of liquidated damages can be paid
- 12.3** Notwithstanding the above, the Employer may terminate the Contract for convenience.
- 12.4** If the Contract is terminated the Contractor shall stop work immediately, make the Site safe and secure and leave the Site as soon as reasonably possible

13. Payment upon Termination

- 13.1** If the Contract is terminated because of a fundamental breach of Contract by the Contractor, the Engineer shall issue a certificate for the value of the work done less advance payments received up to the date of the issue of the certificate, less other recoveries due in terms of the contract, less taxes due to be deducted at source as per applicable law.
- 13.2** If the Contract is terminated at the Employer's convenience, the Engineer shall issue a certificate for the value of the work done, the reasonable cost of removal of Equipment, repatriation of the Contractor's personnel employed solely on the Works, and the Contractor's costs of protecting and securing the Works and less advance payments received up to the date of the certificate, less other recoveries due in terms of the contract and less taxes due to be deducted at source as per applicable law.

14. Dispute settlement

If over the works, any dispute arises between the two parties, relating to any aspects of this Agreement, the parties shall first attempt to settle the dispute through mutual and amicable consultation.

In the event of agreement not being reached, the matter will be referred for arbitration by a Sole Arbitrator not below the level of retired Chief Engineer / Superintending Engineer, (not connected in part or whole with this Project in his service) to be appointed by the first party. The Arbitration

will be conducted in accordance with the Arbitration and Conciliation Act, 1996. The decision of the Arbitrator shall be final and binding on both the parties.

Annexure- A
BILL OF QUANTITIES

S.No.	Description of Work	Unit	Qty.

Gross Total Cost :Rs.

We agree to execute the works in accordance with the approved drawings and technical specifications at a total fixed contract price of Rs.....(amount in figures) (Rs..... amount in words).

Signature of Contractor

Annexure-B

Format of certificate

Certified that the works up to ----- level in respect of construction of -----
----- at ----- have been executed in accordance with the
approved drawing and technical specifications.

Signature

Name & Designation

(Official address)

Place :

Date :

Office seal